

| | | |
|-------------|----------|-------------|
| APP CRS | Rwy Idg | 5002 |
| 153° | TDZE | 488 |
| | Apt Elev | 488 |

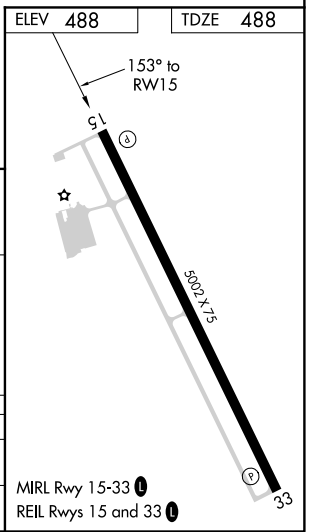
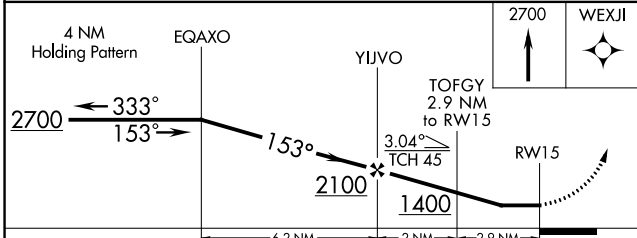
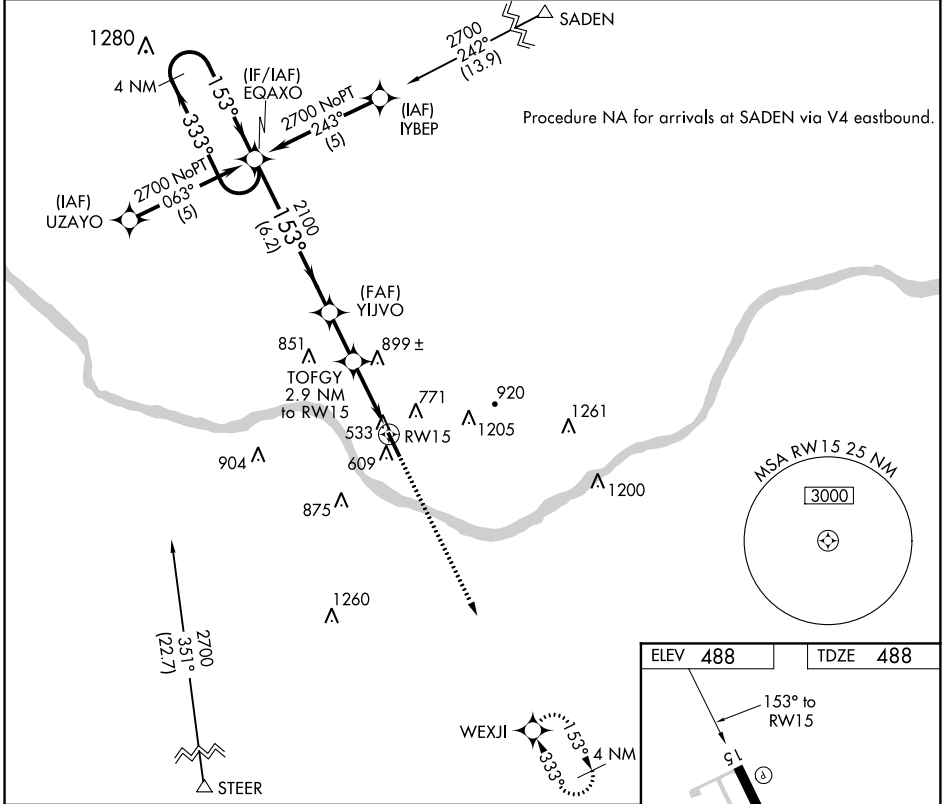
RNAV (GPS) RWY 15

WASHINGTON RGNL (FYG)

▼ DME/DME RNP-0.3 NA. Visibility reduction by helicopters NA.
▲ When local altimeter setting not received, use Spirit of St. Louis altimeter setting and increase all MDA 60 feet and increase Circling Cat C visibility ¼ mile.

MISSED APPROACH: Climb to 2700 direct WEXJI and hold.

| | | |
|--------------------------|---|---------------------------------|
| AWOS-3 121.325 | ST. LOUIS APP CON 126.5 254.3 | UNICOM 122.8 (CTAF) 0 |
|--------------------------|---|---------------------------------|



| CATEGORY | A | B | C | D |
|----------|-----------------------|-------------------------|-------------------------|----|
| LNVA MDA | 1160-1 | 672 (700-1) | 1160-2 672 (700-2) | NA |
| CIRCLING | 1220-1 732 (800-1) | 1260-1¼ 772 (800-1¼) | 1260-2¼ 772 (800-2¼) | NA |

NC-3, 11 OCT 2018 to 08 NOV 2018

NC-3, 11 OCT 2018 to 08 NOV 2018