

WAAS CH 45715 W33A	APP CRS 333°	Rwy Idg TDZE Apt Elev	5001 486 488
--	------------------------	-----------------------------	---

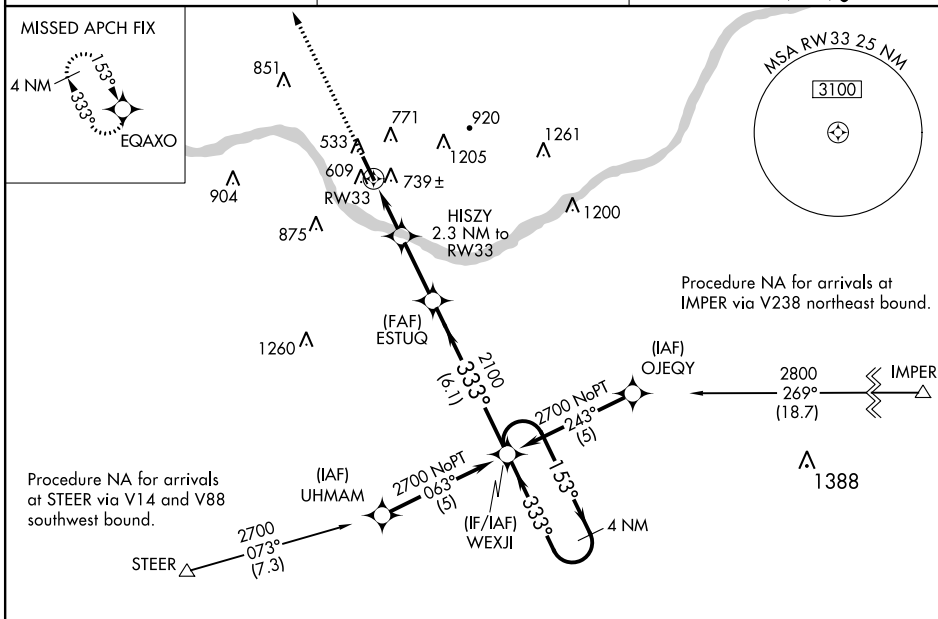
RNAV (GPS) RWY 33

WASHINGTON RGNL (FYG)

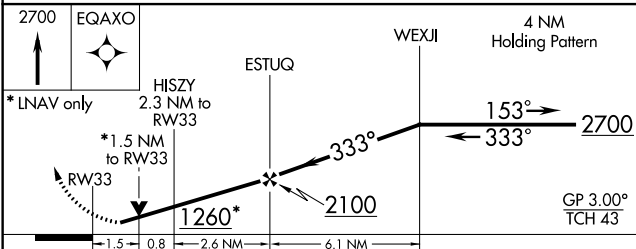
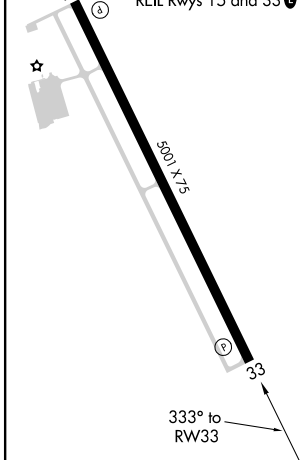
⚠ For uncompensated Baro-VNAV systems, LNAV/VNAV NA below -15°C (5°F) or above 54°C (130°F). DME/DME RNP-0.3 NA. Visibility reduction by helicopters NA. When local altimeter setting not received, use Spirit of St. Louis altimeter setting and increase all DA 42 feet and all MDA 60 feet, increase LNAV/VNAV all Cats visibility ¼ mile and Circling Cat D visibility ¼ mile. VDP and Baro-VNAV NA when using Spirit of St. Louis altimeter setting.

MISSED APPROACH: Climb to 2700 direct EQAXO and hold.

AWOS-3 121.325	ST. LOUIS APP CON 126.5 254.3	UNICOM 122.8 (CTAF)
--------------------------	---	-------------------------------



ELEV 488	TDZE 486
MIRL Rwy 15-33	
REIL Rwy 15 and 33	



CATEGORY	A	B	C	D
LPV DA		824-1¼	338 (400-1¼)	NA
LNAV/VNAV DA		1051-2	565 (600-2)	NA
LNAV MDA	1000-1	514 (600-1)	1000-1½	514 (600-1½)
CIRCLING	1220-1	1260-1¼	1260-2¼	772 (800-2¼)
	732 (800-1)	772 (800-1¼)	772 (800-2¼)	NA

NC-3, 27 APR 2017 to 25 MAY 2017

NC-3, 27 APR 2017 to 25 MAY 2017